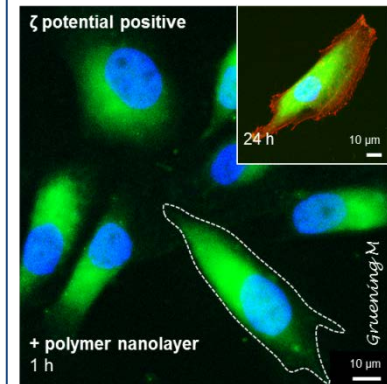
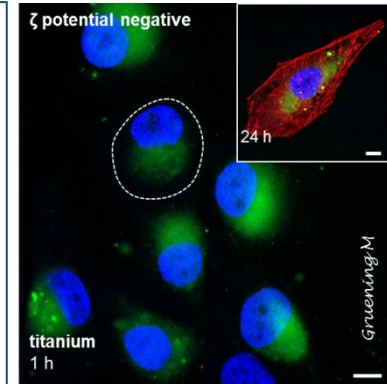
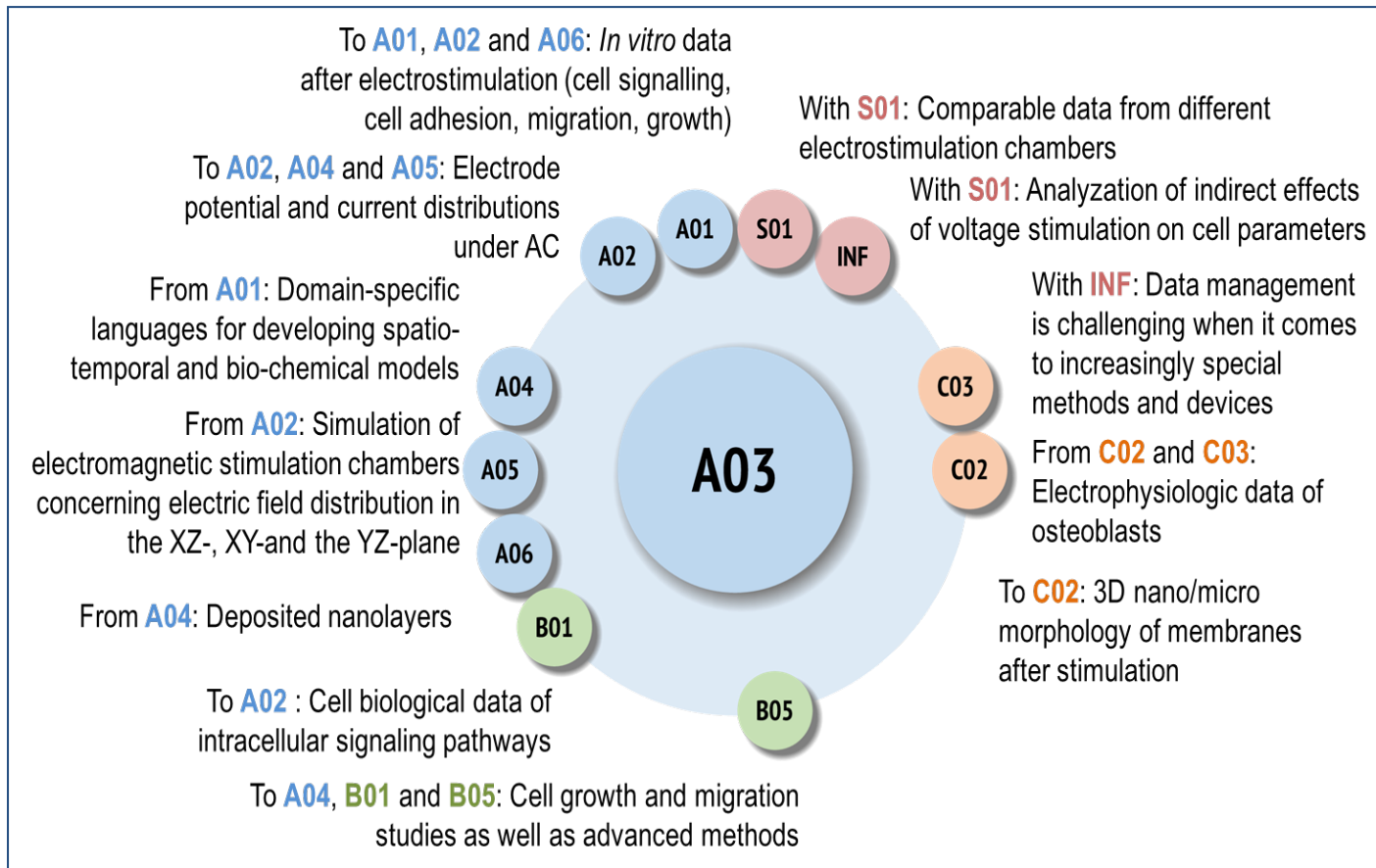


A03 - Role within ELAINE



doi: 10.3389/fbioe.2020.01016
Frontiers in Bioengineering and Biotechnology

A03 provides experimental data for multiple coupled phenomena in osteoblasts (MG-63) and human mesenchymal stem cells (hMSC) after AC-stimulation.

Principle Investigators:

Barbara Nebe¹

Sylvia Speller²

Henrike Rebl¹

¹Dept. of Cell Biology | UMR

²Institute of Physics | Faculty of Mathematics and Natural Sciences |

both University of Rostock